

Exceat Bridge Replacement Scheme

Project kick off meeting with stakeholders

East Sussex
County Council



GOOD WORKS

Project funding



Funded by UK Government

**£7.9m funding from the Government's
Levelling Up Fund in 2021**

**£11.28m from the Bus Service
Improvement Plan Round 1 funding**

**East Sussex
County Council**



**Funding from the County
Council's capital funds**

**East Sussex
County Council**



GOOD WORKS

Project delivery team



Principal Contractor



Bridge Designer



Project Overview

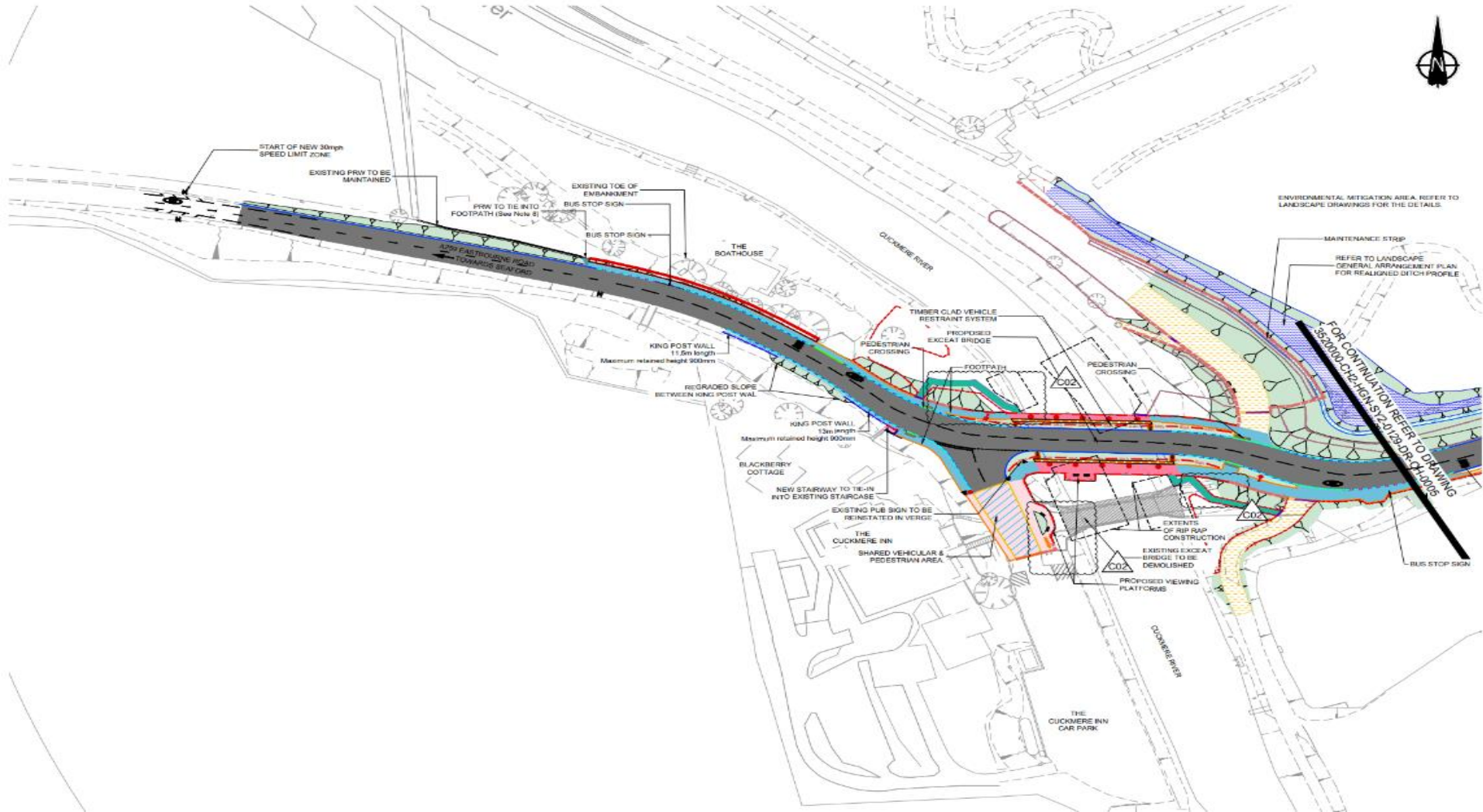
To replace the existing bridge with a new, two-lane bridge to the north of the current bridge, with improved footways, viewing platforms and a shared space outside the Cuckmere Inn.

The new bridge will:

- Replace an old bridge which has come to the end of its life
- Provide economic benefits to the area
- Ease congestion and reduce journey times
- Improve punctuality and reliability of buses
- Improve accessibility for visitors to the area







Current project timescales

- Arrival on site: June 2026
- Construction of working platform and site welfare: Summer 2026
- Sheet Piling installation: Summer 2026
- Bored Piling installation: Autumn 2026
- Reinforced Concrete works: Winter 2026
- Bridge beam installation and deck construction: Spring 2027
- Drainage works, retaining wall and road works on west side of the bridge: Summer 2027
- Drainage works, embankment construction and road works on east side of the bridge:
Autumn 2027
- New bridge to open – end of 2027
- Demolition of existing bridge and completion of works: early 2028

Closure and Diversion



Full closure of A259 – access to pub maintained from east





Traffic Management during road closures

- Liaison with emergency services and bus companies
- Clear communications and signage
- Information at train stations with QR codes
- Bollards and verge management to discourage parking along the C120

Speeding/safety on causeway once new bridge is in place

- Safer alignment and pedestrian/cycle provision of the new bridge
- Reduced speed limit will be introduced with traffic calming measures
- Crossing proposal at Seven Sisters Country Park Visitor Centre



Our objectives

- To deliver this project safely, in time, and within budget, while minimising the impact of the works on local people.
- To maintain an open and continuous communication with our stakeholders, ensuring we're taking concerns into consideration and keeping them updated on our progress (and challenges) where necessary.
- To be good neighbours and engage with the local communities, contributing to a positive social impact throughout the life of the project.

- We will host a monthly meeting to foster continuous engagement with our key stakeholders, starting as soon as we begin construction.
- We will share regular newsletters and updates of construction progress and traffic management plans to stakeholders and the public via the East Sussex Highways website at <https://live.eastsussexhighways.com>
- We will work with local councils to ensure messages get to residents in the grassroots and we'll liaise with directly impacted stakeholders at their preference to ensure everyone is updated with our progress.

Social Value Plan Overview

- **Purpose**

Our Social Value Plan ensures lasting benefits beyond construction for the local communities, and the environment.

- **Approach**

Our plan embeds employment, skills, local procurement, and environmental stewardship into daily project delivery.



Community & Local Economy

Environment & Sustainability



People, Skills & Employability



- Volunteering for employability of local people
- STEM sessions and site visits for local students
- Work experience opportunities for local students
- Tree planting and promotion of local habitats
- Volunteering time with local charities
- Donations to local eco partners
- Carbon Reduction Workshops
- Recruitment of local people
- Recruitment of disadvantaged local people

Measuring Impact



- All social value activities will be tracked, including employment, training, volunteering, donations, and environmental actions to ensure delivery.
- Outcomes are reported transparently using recognised social value metrics to demonstrate project impact clearly and consistently.
- The project invests in skills, community support, local economy, and the environment to create lasting benefits beyond completion.

**For enquiries, comments and
observations,**

please contact us on:

0781 194 1681

Or email:

ExceatBridge@jackson-civils.co.uk